



THE STATE OF WASHINGTON

WELCOME TO WASHINGTON STATE

State of Washington Tourism (SWT) is the official Destination Marketing and Management Organization for the State of Washington. Known as the Evergreen State, Washington has a diverse landscape. The west side provides spectacular views of the Pacific Ocean, lush rainforests in Olympic National Park, towering mountains in North Cascades National Park and Mount Rainier National Park, and an active maritime adventure and sustainable aquaculture in Puget Sound. The east side boasts an arid climate and the ideal terroir for growing fruit, wheat, hops and grapes. Washington State is the second largest wine producer in the USA. Travel along scenic byways from urban centers to rural communities that provide farm-to-table menus, world-class wineries and craft breweries, vibrant art and culture, family-friendly museums, Native American heritage and lots of year-round outdoor adventures.

Seattle-Tacoma International Airport (SEA) is the ideal starting point for travel to the Pacific Northwest with more than 120 direct, non-stop flights each week from SEA to locations throughout Europe, including London, Dublin, Paris, Iceland, Frankfurt, Munich, Amsterdam, and Istanbul. Connect seamlessly to three conveniently located downtown cruise berths owned by the Port of Seattle providing nearly 280 round-trip sailings to Alaska with 11 major cruise lines. The Port of Seattle's traveler-friendly programs such as baggage storage, Port Valet, and SEA security "Spot Saver," make it easier than ever to explore Seattle, Washington and beyond.



MIKE MOË
State of Washington Tourism
mike@stateofwatourism.com



LISA KRUSE
State of Washington Tourism
Lisa@stateofwatourism.com



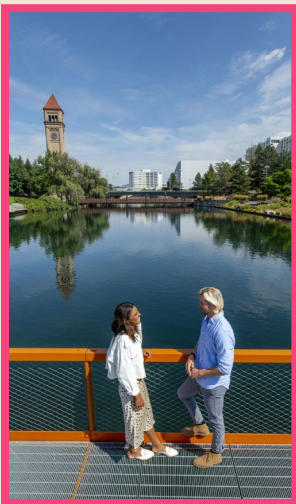
TOP THINGS TO KNOW ABOUT WA

- 29 federally recognized tribes
- Top apple producer
- 1050+ Wineries
- Over 75% of the country's hops are grown in the Yakima Valley
- 157 miles of Pacific Ocean coastline
- Year-round outdoor recreation
- 4000+ hikes
- Largest ferry fleet in the US
- 3 National Parks
- 3000+ alpine glaciers



Scan here for itineraries, maps, what's new, and more.

REGIONS OVERVIEW



EASTERN

Home to Washington's second-largest city, Eastern Washington boasts millions of acres of protected forest land, ghost towns, outdoor recreation, and unique small communities. Experience ranch life or dig for fossils in Republic, take a gondola ride over the country's largest urban waterfall in Spokane, road trip through the rolling hills of the Palouse, or attend the National Lentil Festival in Pullman.



WINE COUNTRY

With sun-drenched days and more than 300 wineries, Washington's Wine Country offers a stunning setting for sipping award-winning wines straight from the source. Sample craft brews in the Yakima Valley (the nation's leading hops producer), dive into history and outdoor recreation in Tri-Cities, visit walkable tasting rooms in Walla Walla, or road trip to see Palouse Falls or tour Hells Canyon from Clarkston.

NORTHWEST

Discover Washington's largest islands—Whidbey and the San Juans— as well as the rich farmland of the Skagit Valley and western access to North Cascades National Park. Sample farm-to-table dining in Bellingham, drive along scenic byways, hit the trail for mountain biking and hiking, or stroll quiet beaches and watch for whales from Orcas and San Juan islands.



NORTH CENTRAL

Running along the eastern Cascade Mountains to the Canadian border, this region boasts sparkling lakes, vast forests, and vineyards producing world-class wines. Visitors can enjoy year-round recreation, from hiking and fishing to cross-country skiing. Stroll the Bavarian-style village of Leavenworth, sip wine along Lake Chelan, embrace solitude in Stehekin, or dive into cowboy culture in Winthrop and Ellensburg.



FOLLOW US

@STATEOFWATOURISM





TOP 5 CITIES BY POPULATION

Seattle	784,754
Spokane	231,132
Tacoma	226,142
Vancouver	198,018
Bellevue	158,719

COMING UP

- FIFA World Cup 2026
- New Int'l Arrivals Area at SEA
- EV Route on North Cascades
- Flights & Flight Seeing
- America's 250th



METRO PUGET SOUND

Home to Washington's urban core, the state capital, and the main international airport, this region blends vibrant city life with easy access to outdoor experiences. Explore Seattle's iconic attractions, discover Tacoma's museums and waterfront, learn about Everett's aviation history, or sip your way through Woodinville's wineries. Mount Rainier National Park is also easily reachable by car.

SOUTHWEST

Stretching from the Pacific Coast to the western Columbia River Gorge, this corner of the state features a mix of natural beauty, historic sites, and small-town charm. Enjoy Mount St. Helens National Volcanic Monument and southern access to Mount Rainier, stroll the sandy beaches of the Long Beach Peninsula, or explore the vibrant Vancouver waterfront. Hikes, lighthouses, and fresh seafood are also in ample supply.



PENINSULAS

The Kitsap and Olympic peninsulas are home to maritime communities and rich cultural and outdoor experiences, from hiking and sailing to stargazing. Discover Bainbridge Island's charming downtown, naval history in Bremerton, Victorian architecture in Port Townsend, and much more. The rugged beaches, mountains, and rain forests of Olympic National Park are also a drive away.



GETTING HERE

BY AIR

Wherever you are, it is easy to get here. The State of Washington is served by thirty-one airlines with 91 non-stop domestic and 38 international destinations including Canada and Mexico.

SEA: SEA is the largest airport in the Pacific Northwest region of the U.S. and is a hub for Alaska Airlines and Delta Airlines. SEA has European carriers with direct connections, and is the primary hub for quick access to inland cities and wine regions.

GEG: Spokane International Airport is located five miles west of downtown Spokane and is the primary airport of the inland Northwest.

BY LAND

The State of Washington offers breath-taking, diverse terrain that can be explored by car, motorcoach or train.

I-5 & I-405: Travel north and south to discover big cities and small coastal towns, beaches, rain forests, National Parks and more!

I-90: Explore east and west over the Cascade Mountains on scenic byways. Follow the craft beer trail or visit wine country, hike trails, and more!

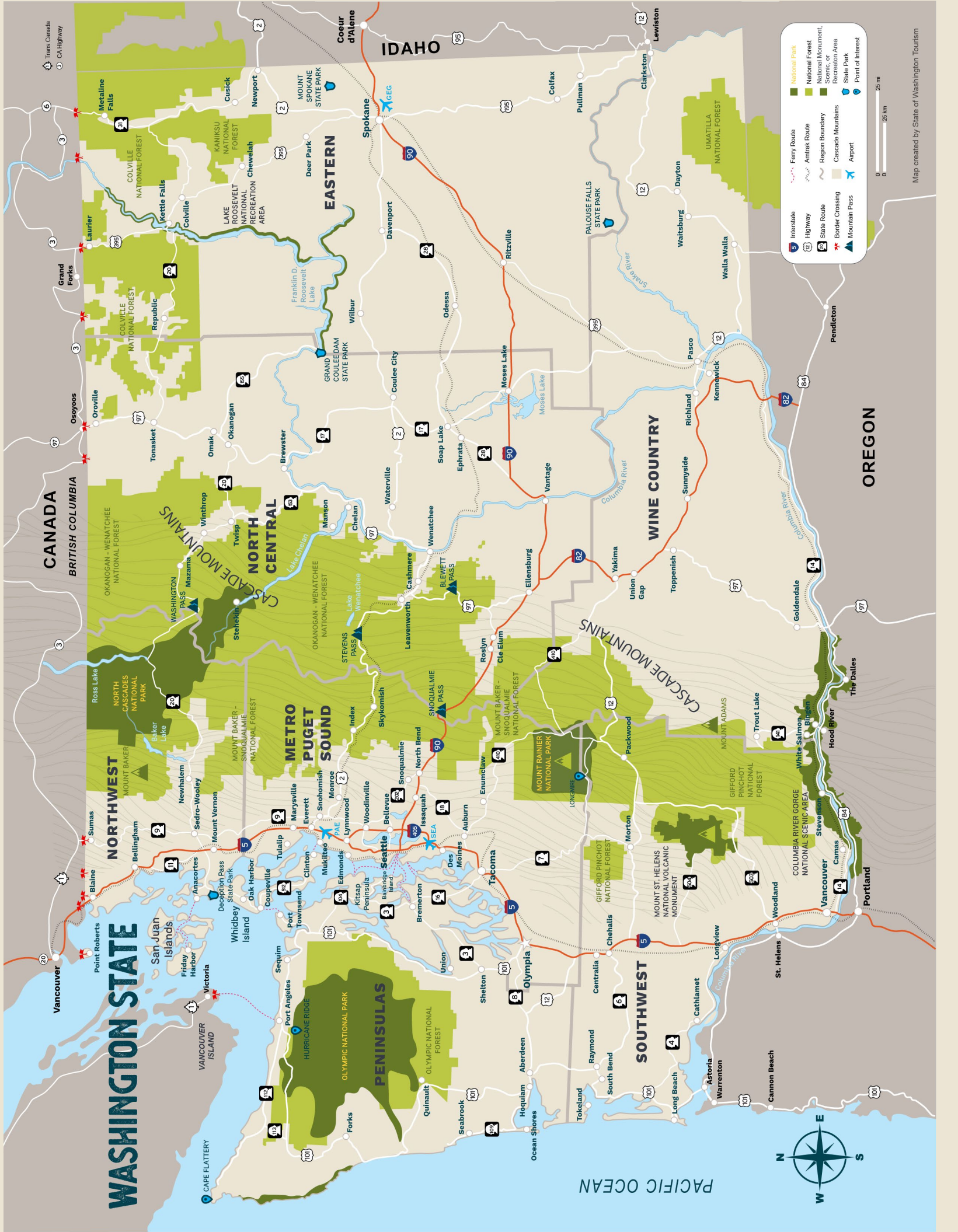
BY SEA

Washington boasts miles of coastline along the Pacific Ocean, extensive rivers, and mountain lakes statewide.

Ferry: Find ferry routes to the San Juan Islands and small communities of Puget Sound.

River Cruise: Riverboats navigate the Columbia River and Puget Sound for multi-day cruises.

Cruise Ship: Port of Seattle cruise travelers can explore Washington and Alaska in one trip. All major cruise lines currently operate from the Bell Street Terminal at Pier 66 and Smith Cove Terminal at Pier 91 offering nearly 280 sailings.



WASHINGTON STATE

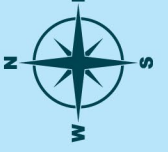
IDAHO

OREGON

CANADA
BRITISH COLUMBIA

Legend

- Interstate (5)
- Highway (12)
- State Route (2)
- Border Crossing (★)
- Mountain Pass (▲)
- Ferry Route (⋯)
- Antitank Route (⋯)
- Region Boundary (⋯)
- State Boundary (⋯)
- Border Crossing (★)
- Mountain Pass (▲)
- National Park (■)
- National Forest (■)
- National Monument, Scenic, or Recreation Area (■)
- Cascade Mountains (■)
- State Park (■)
- Point of Interest (●)



Map created by State of Washington Tourism